



WORLD'S BEST
ALLOY BULLBARS

East Coast Bullbars (ECB Pty Ltd)

Tel: 07 3897 5700

Fax: 07 3283 1168

ecb@ecb.com.au www.ecb.com.au

29 Snook St
Clontarf QLD 4019
Australia

Po Box 122
Margate QLD 4019
Australia

8T132SY, NB6T132SY, NBT132SY

REPLACES: 00.00.00
REVISED: 16.03.13

FITTING INSTRUCTIONS

TOYOTA RAV 4 12-2015 on TYPE 8, 63mm SERIES 2 NUDGE BAR and 76mm NUDGE BAR VEHICLE FRONTAL PROTECTION SYSTEM (VFPS) FOR AIR BAG & ADR COMPLIANT VEHICLES

Check installation hardware before commencing.

NOTE: VEHICLES WITHOUT PARKING SENSORS SKIP STEPS: 11, 12, 14 AND 16

NOTE: SPOTLIGHTS SHOULD NOT BE FITTED TO VEHICLES WITH THE SONAR SAFETY SYSTEM.

1. Lift Bonnet.
2. Across top of false grille, remove two 10mm head bolts, one push pull plastic clip, one push pull plastic clip with rubber top and two Phillips head screws with rubber top. From underside of vehicle, remove six 10mm head bolts. On inner guards one Phillips head screw and one flat blade clip (per side). Carefully pull out on rear of wings to unclip bumper from guards, unplug fog lights (if fitted) and remove front bumper. Remove polystyrene infill from front of bumper support.
3. Disconnect wiring from horns and temperature sensor. Remove wiring from top of bumper support in readiness for removal of bumper support.
4. Remove bumper support, four 14mm head bolts each side.
5. Install steel mounting brackets (supplied) onto front of bumper support. Two of the holes will match the bumper support (one only on rear face). Using measurement of inside of Nudge bar and Type 8 bar (to outside of steel mounts) and outside of Series 2 nudge bar (to inside of steel mounts), align steel mounting brackets on bumper support. Ensure steel mounting brackets are central to bumper support. Drill holes in bumper support using steel mounting brackets as a guide. **Blow filings clear and treat all exposed metal with a rust inhibitor.**
6. Fasten steel mounting brackets to bumper support using four M10 x 60 bolts and steel washer plate (supplied) from rear with flat washer, spring washer, and nut (supplied) at front. Fit 3/8 x 6 bolts, flat washers, spring washers and nuts (supplied) to rear holes of mount through crush cans. **See figures 1 and 2. TIGHTEN ALL BOLTS.**
7. Refit bumper support to vehicle using M10 x 30 bolts, spring washers and flat washers (supplied). Refit electrics to original position connecting horns and air temperature sensor. **NOTE:** Electrical wiring can be tucked into area between top of steel mounting brackets and bumper support without risk of damage.
8. Remove lower plastic bumper support four 10mm head bolts and lower section of air dam from front of vehicle to allow access to rear bolt of protection bar. Allow under body guard to hang.
9. Using measurement of steel mounting bracket, mark rear of plastic bumper. Ensure marks are central to plastic bumper. Measure opening in plastic bumper to ensure width suits both alloy and steel mounting brackets. Trim fins from lower bumper grille to suit. **Caution:** For best possible result, only trim the amount required fitting the protection bar and mounts through. **See figure 3**
10. Trim the rear of the polystyrene infill to suit the steel mounting brackets. **See figure 4.** The polystyrene will sit firmly in the rear of the plastic bumper as bumper is being refitted.



**WORLD'S BEST
ALLOY BULLBARS**

East Coast Bullbars (ECB Pty Ltd)

Tel: 07 3897 5700

Fax: 07 3283 1168

ecb@ecb.com.au www.ecb.com.au

29 Snook St
Clontarf QLD 4019
Australia

Po Box 122
Margate QLD 4019
Australia

11. Remove the 2 centre parking sensors from plastic bumper using a small flat blade screwdriver to gently pry open the 4 tabs holding the sensor to the mount. **See figure 5.**
12. Remove the 2 centre parking sensor mounts by prying the legs of the mount open and putting slight pressure to pull the front and rear of the mount apart. **See figure 6.**
13. Refit plastic bumper and polystyrene infill as per reverse of step 2. Care must be taken not to damage vehicle or plastic bumper when refitting.
14. Install plastic sensor mounts into the hole at the front of the protection bar. **Ensure the large openings on the front and rear part of the sensor mount line up.**
15. Install Protection Bar onto steel mounting brackets using M10 x 35 bolts, flat washers, spring washers and nuts (supplied).
16. Align protection bar with front of vehicle. **TIGHTEN ALL BOLTS. See figure 7 and 9** for front views and **figures 8 and 10** for side views.
17. Fit parking sensors into mounts on the bar by aligning the large clip on the sensor to the large hole in the mount. Secure wiring to the alloy mount using supplied zip ties.
18. **IMPORTANT: Check the sensors capability by turning the car on and selecting drive. If the sensors are triggered with nothing in front of the vehicle, enlarge the sensor holes in the bar slightly. Caution: If sensor holes are enlarged too much the sensor won't be secured properly in the bar.**
19. **Important:** Refit radiator air dam to vehicle from under bumper.
20. Refit lower plastic bumper support to underside of bumper.

ENSURE NUMBER PLATE IS CLEARLY VISABLE

Note: When fitting/refitting the licence plate to the vehicle, ensure there is no obstruction to licence plate vision in accordance with local authorities. If required relocate licence plate to an alternate location.

Further VFPS Notes:

- a) Do not attach VFPS to the vehicle using anchorages not intended for this purpose (e.g. engine mounting bolts).
- b) Do not use this product for any vehicle make or model, other than those specified by the VFPS manufacturer.
- c) Do not remove the plaque or label from the VFPS.
- d) Do not modify the structure of the VFPS in any way.
- e) No accessory or fitment should project forward of the VFPS forward profile.
- f) **ENSURE THESE INSTRUCTIONS ARE LEFT WITH VEHICLE OWNER AND/OR OPERATOR.**



**WORLD'S BEST
ALLOY BULLBARS**

East Coast Bullbars (ECB Pty Ltd)

Tel: 07 3897 5700

Fax: 07 3283 1168

ecb@ecb.com.au www.ecb.com.au

29 Snook St
Clontarf QLD 4019
Australia

Po Box 122
Margate QLD 4019
Australia

IMPORTANT INFORMATION

Periodically check bolts and nuts for correct tightness, especially if travelling on rough roads

FITTING KIT

1 – Pair steel mounting brackets	28 – M10 flat washers
2 – steel washer plates (220 x 100 x 4, four 10mm holes)	22 – M10 spring washers
8 – M10 x 1.25 x 30 bolts	12 – M10 nuts
4 – M10 x 1.25 x 35 bolts	2 – 3/8 nuts
8 – M10 x 1.25 x 60 bolts	2 – Zip ties
2 – 3/8 x 6 bolts.	2 – 27mm black plug



Figure 1: Rear of mount showing bolt direction.
Bumper support removed for photo.

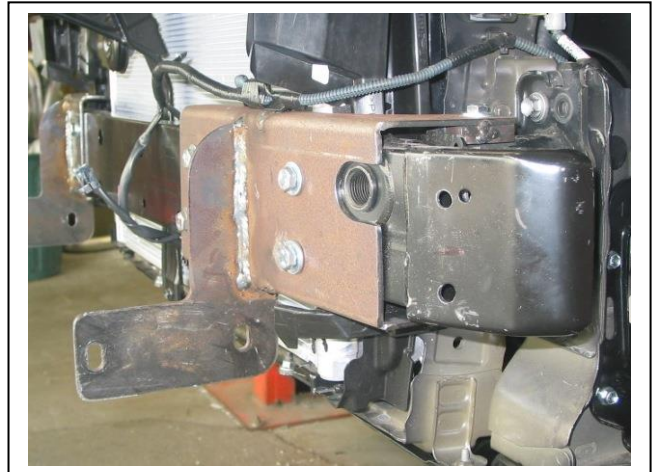


Figure 2: Steel mounting bracket fitted to bumper support - Passenger side shown



Figure 3: Trim grille for mounts to fit through

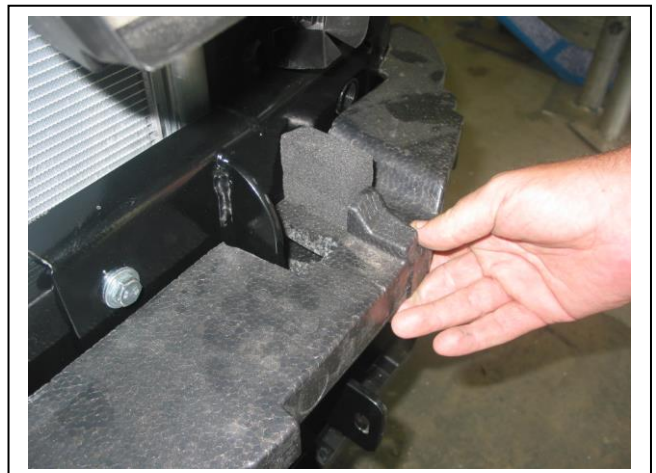


Figure 4: Trim polystyrene infill to fit around mount.



East Coast Bullbars (ECB Pty Ltd)

Tel: 07 3897 5700

Fax: 07 3283 1168

ecb@ecb.com.au www.ecb.com.au

29 Snook St
Clontarf QLD 4019
Australia

Po Box 122
Margate QLD 4019
Australia

WORLD'S BEST
ALLOY BULLBARS



Gently pry open the 4 tabs to remove sensor

Figure 5: Remove centre parking sensors



Figure 6: Remove centre parking sensor mounts



Figure 7: Type 8/ Series 2 front alignment

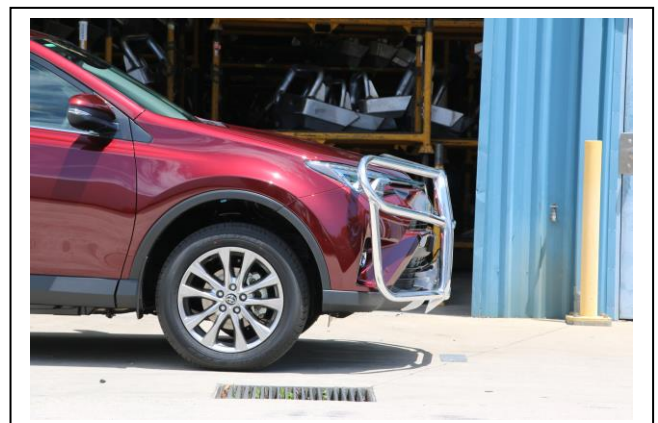


Figure 8: Type 8 side view



Figure 9: 76mm Nudge Bar

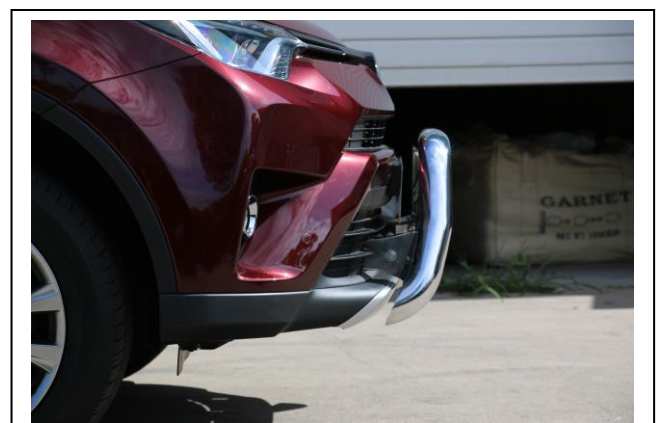


Figure 10: 76mm Nudge Bar side view



**WORLD'S BEST
ALLOY BULLBARS**

East Coast Bullbars (ECB Pty Ltd)

Tel: 07 3897 5700

Fax: 07 3283 1168

ecb@ecb.com.au www.ecb.com.au

29 Snook St
Clontarf QLD 4019
Australia

Po Box 122
Margate QLD 4019
Australia

We value your comments

Dear Fitter,

Parkside would like to know how you went with the installation of this product. We value your comment and may need to contact you to clarify some details so please complete your contact details clearly.

We would appreciate if you could complete as many of the following details as possible.

Your Name:	Your contact No.
Product Part No.	Product Invoice No.
Product Description:	Make, model, and year of vehicle:
Product Work Order No.	Company your from/Company product purchased from:

Date of Fitment: ____/____/____

Was the fitting hardware supplied complete?

Yes

No

If no what was not supplied

Did the installation go well?

Yes

No

Please provide comments

Please draw diagrams if you need to.



**WORLD'S BEST
ALLOY BULLBARS**

East Coast Bullbars (ECB Pty Ltd)

Tel: 07 3897 5700

Fax: 07 3283 1168

ecb@ecb.com.au www.ecb.com.au

29 Snook St
Clontarf QLD 4019
Australia

Po Box 122
Margate QLD 4019
Australia



WORLD'S BEST
ALLOY BULLBARS

East Coast Bullbars (ECB Pty Ltd)

Tel: 07 3897 5700

Fax: 07 3283 1168

ecb@ecb.com.au www.ecb.com.au

29 Snook St
Clontarf QLD 4019
Australia

Po Box 122
Margate QLD 4019
Australia

DESPATCH CHECKLIST

8T132SY, NB6T132SY, NBT132SY

ICZBKTT130



Work Order #		See other side off this page for photos of all mounts
Finish:		
Transport:		
Due Date:		

OC.....1 – Pair Steel mounting brackets.

OC.....2 – Steel washer plates (220 x 100 x 4, four 10mm holes)

BK.....1 – Bolt kit



Is this product “the best it can be” Yes _____ / _____
Wrapper's initials / Checker initials

If NO fix before continuing

All parts checked and completed by:

Nut and bolts: _____ Date __/__/__

Order control: _____ Date __/__/__

Final wrap check: _____ Date __/__/__



East Coast Bullbars (ECB Pty Ltd)

Tel: 07 3897 5700

Fax: 07 3283 1168

ecb@ecb.com.au www.ecb.com.au

29 Snook St
Clontarf QLD 4019
Australia

Po Box 122
Margate QLD 4019
Australia

WORLD'S BEST
ALLOY BULLBARS



Wrappers initials / Checkers initials